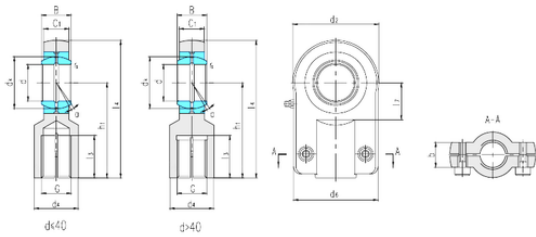




BEARING CORP. LTD.



LS SIQ80ES plain bearings

Bearing No. SIQ80ES

Bore Diameter	80 mm
d	80 mm
B	55 mm
b	45 mm
d2	205 mm
d4	90 mm
d6	156 mm
dk	105 mm
h1	185 mm
l3 min.	75 mm
l4 max.	287,5 mm
l7 min.	92 mm
r min.	1 mm
C1	47 mm
Thread (G)	M48 × 2
Bolt (G)	M20 × 45
Angle	6 °
Weight	16,2 Kg
Basic dynamic load rating (C)	400 kN

SIQ80ES Bearing 2D drawings and 3D CAD models