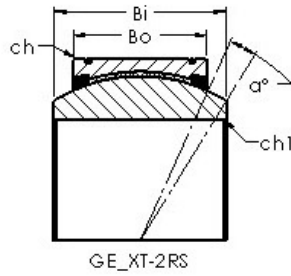
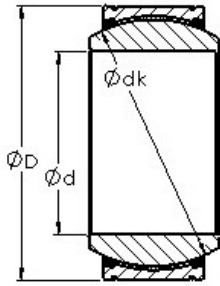




BEARING CORP. LTD.



AST GE180XT-2RS plain bearings

Bearing No. GE180XT-2RS

| | |
|-----------------------------------------------------|---------------------------------------------------------------------------|
| Bore Diameter | 180 mm |
| Outer Diameter | 260 mm |
| Bearing Type - double fracture | sealed |
| Bore Dia (d) | 180.0000 |
| Outer Dia (D) | 260.0000 |
| Outer Width (Bo) | 80.0000 |
| Inner Width (Bi) | 105.0000 |
| Dynamic Load Rating (Cr) | 2,700,000 |
| Static Load Rating (Cor) | 6,480,000 |
| Max. shaft corner radius, or 45 deg. chamfer (ch1) | 1.100 |
| Max. housing corner radius, or 45 deg. chamfer (ch) | 1.100 |
| Spherical Diameter (dk or Dk) | 225.000 |
| Mis-alignment Angle (a deg.) | 6 |
| Weight (g) | 18,500.00 |
| Material | Inner ring and outer ring are made from 52100 chrome steel, or equivalent |

GE180XT-2RS Bearing 2D drawings and 3D CAD models