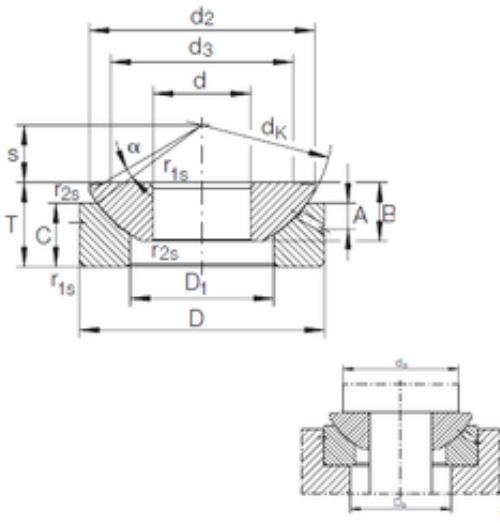




BEARING CORP. LTD.

120 mm x 230 mm x 52 mm INA GE 120 AX
plain bearings

Bearing No. GE 120 AX



GE 120 AX Bearing 2D drawings and 3D CAD models

Size	120x230x64 mm
Bore Diameter	120 mm
Outer Diameter	230 mm
Width	64 mm
d	120 mm
D	230 mm
T	64 mm
B	52 mm
C	45 mm
d2	214 mm
d3	170 mm
dk	245 mm
r1 min.	1 mm
r2 min.	0,3 mm
A	16,5 mm
D1	154 mm
S	52,5 mm
da max	170 mm
Da min	162 mm
Angle	8 °
Weight	13 Kg
Basic dynamic load rating (C)	1240 kN