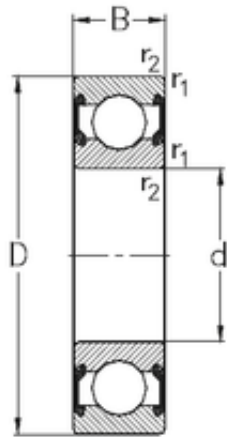




# BEARING CORP. LTD.

30 mm x 55 mm x 13 mm NKE 6006-2RS2 deep groove ball bearings



Bearing No. 6006-2RS2

Size	30x55x13 mm
Bore Diameter	30 mm
Outer Diameter	55 mm
Width	13 mm
d	30 mm
D	55 mm
B	13 mm
C	13 mm
r1 min.	1 mm
r2 min.	1 mm
Weight	0,115 Kg
Basic dynamic load rating (C)	13,2 kN
Basic static load rating (C0)	8,3 kN

6006-2RS2 Bearing 2D drawings and 3D CAD models