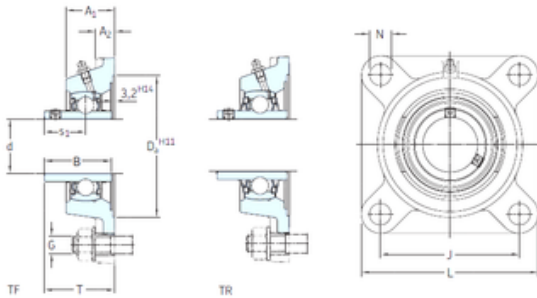




BEARING CORP. LTD.

SKF FY 1.3/8 FM bearing units

Bearing No. FY 1.3/8 FM



FY 1.3/8 FM Bearing 2D drawings and 3D CAD models

Bore Diameter	34,925 mm
d	34,925 mm
s1	29,4 mm
A1	34,5 mm
B1	38,9 mm
G	12 mm
J	92 mm
L	118 mm
T	50,4 mm
A2	13 mm
Weight	1,5 Kg
Basic dynamic load rating (C)	25,5 kN
Basic static load rating (C0)	15,3 kN
Fatigue load limit (Pu)	0,655
Category	Flange Block Bearings
Inventory	0.0
Manufacturer Name	SKF
Minimum Buy Quantity	N/A
Weight / Kilogram	1.422
EAN	7316576614446
Product Group	M06110
Number of Mounting Holes	4
Mounting Method	Eccentric Collar
Housing Style	4 Bolt Square Flange Block
Rolling Element	Ball Bearing
Housing Material	Cast Iron



BEARING CORP. LTD.

Expansion / Non-expansion	Non-expansion
Mounting Bolts	1/2 Inch
Relubricatable	Yes
Insert Part Number	YET 207-106
Seals	M Seal
Housing Configuration	1 Piece Solid
Pilot Configuration	No Pilot
Inch - Metric	Inch
Long Description	4 Bolt Square Flange Block; 1-3/8" Bore; 5.1" Bolt Circle; 3-5/8" Bolt Spacing; 1 Piece Solid; Eccentric Collar Mount; Cast Iron; Ball Bearing; 1-17/32" Length Thru Bore; Relubrica
Other Features	Single Row Standard Duty Narrow Inner Race Open End Y Bearing
Category	Flange Block
UNSPSC	31171501
Harmonized Tariff Code	8483.20.40.40
Noun	Bearing
Keyword String	Flanged
Manufacturer URL	http://www.skf.com
Manufacturer Item Number	FY 1.3/8 FM
Weight / LBS	3.42
Bolt Spacing	3.625 Inch 92.08 Millimeter
Cartridge Pilot Depth	0 Inch 0 Millimeter
Nominal Bolt Circle Diameter Round	5.1 Inch 130 Millimeter
Bore	1.375 Inch 34.925 Millimeter
Length Thru Bore	1.531 Inch 38.9 Millimeter
Cartridge Pilot Diameter	0 Inch 0 Millimeter



BEARING CORP. LTD.

Housing material	Cast iron
D_a	106.4 mm
D_{b1}	87 mm
D_{b2}	95 mm
A	34.5 mm
A_1	13 mm
A_3	3.2 mm
A_5	24.5 mm
B_1	38.9 mm
N	14 mm
s_1	29.4 mm
R_G	1/4-28 UNF
R_1	22.5 mm
D_N	6.5 mm
SW_N	7 mm
G_N	1/4-28 SAE-LT
J_6	106 mm
J_7	29 mm
N_4	4 mm
Basic dynamic load rating C	25.5 kN
Basic static load rating C_0	15.3 kN
Fatigue load limit P_u	0.655 kN
Limiting speed	5300 r/min
Mass bearing unit	1.3 kg
Thread grub screw G_2	3/8-24 UNF
Hexagonal key size for grub screw N	4.763 mm
Recommended tightening torque for grub screw	16.5 N · m
Recommended diameter for attachment bolts, mm G	12 mm
Recommended diameter for attachment bolts, inch G	0.5 in