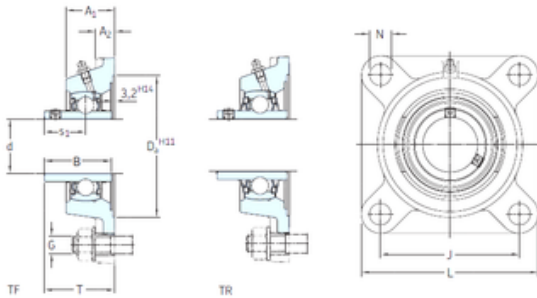




# BEARING CORP. LTD.

## SKF FYJ 1.1/2 TF bearing units

Bearing No. FYJ 1.1/2 TF



FYJ 1.1/2 TF Bearing 2D drawings and 3D CAD models

Bore Diameter	38,1 mm
Width	49,2 mm
d	38,1 mm
s1	30,2 mm
A1	36 mm
B	49,2 mm
G	14 mm
J	102 mm
L	130 mm
T	51,2 mm
A2	16 mm
Weight	1,95 Kg
Basic dynamic load rating (C)	30,7 kN
Basic static load rating (C0)	19 kN
Fatigue load limit (Pu)	0,8
Housing material	Cast iron
D <sub>a</sub>	115.9 mm
D <sub>b1</sub>	99 mm
D <sub>b2</sub>	107 mm
A	36 mm
A <sub>1</sub>	14 mm
A <sub>3</sub>	3.2 mm
N	16 mm
s <sub>1</sub>	30.2 mm
R <sub>G</sub>	1/4-28 UNF
R <sub>1</sub>	23 mm



## BEARING CORP. LTD.

$D_N$	6.5 mm
$SW_N$	7 mm
$G_N$	1/4-28 SAE-LT
$J_6$	118 mm
$J_7$	34 mm
$N_4$	4 mm
Basic dynamic load rating C	30.7 kN
Basic static load rating $C_0$	19 kN
Fatigue load limit $P_u$	0.8 kN
Limiting speed	4800 r/min
Mass bearing unit	1.75 kg
Thread grub screw $G_2$	5/16-24 UNF
Hexagonal key size for grub screw N	3.969 mm
Recommended tightening torque for grub screw	6.5 N · m
Recommended diameter for attachment bolts, mm G	14 mm
Recommended diameter for attachment bolts, inch G	0.5625 in